



01/06/2026 to 30/06/2026

B&E FOODS /QLD

# MONTHLY MENU

*Where Quality Counts!*



**OTOKI**

## NO.1 KOREAN KETCHUP & MAYO

*Trusted Korean flavours for foodservice*



**\$25.<sup>80</sup>** / Ctn

**Only \$1.95/kg**

**No. 18126**  
Tomato Ketchup Spout  
Pouch 3.3kg(4) Otoki



**\$53.<sup>70</sup>** /Ctn

**Only \$4.20/kg**

**No. 18137**  
Gold Mayonnaise Spout  
Pouch 3.2kg(4) Otoki

# PREMIUM PORK

QUALITY YOU CAN TRUST



**\$8** <sup>30</sup> / <sub>KG</sub>



16637

FRESH PORK - TOPSIDE DENUDED  
I/W 3KG (6) R/W



**\$10** <sup>00</sup> / <sub>KG</sub>



16895

FRESH PORK - NECK COLLAR BUTT  
2KG(6) R/W



**\$9** <sup>00</sup> / <sub>KG</sub>



28038

FRESH PORK - MAIN MUSCLE LOIN  
R/L B/L 4KG (5) R/W



RW - RANDOM WEIGHT



FZ 10906

FROZEN PORK - BELLY R/ON  
B/LESS 5KG (4) VAC R/W



**\$14** <sup>30</sup> / <sub>KG</sub>



27182

FRESH PORK - BELLY R/ON  
B/LESS 5KG (4) R/W



**\$14** <sup>80</sup> / <sub>KG</sub>



FZ 10908

FROZEN PORK - BELLY R/LESS  
B/LESS VAC 5KG (4) R/W



**\$15** <sup>00</sup> / <sub>KG</sub>



17096

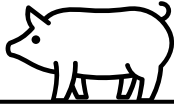
FRESH PORK - SHOULDER  
R/L B/L 4KG (4) R/W



**\$8** <sup>00</sup> / <sub>KG</sub>

FZ- FROZEN PACK AND STORAGE

# PORK OFFAL & VARIETY



**\$7<sup>00</sup>**  
KG

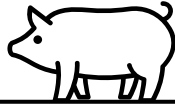
71203  
FROZEN PORK BONE -  
BRISKET BONE (SOFT  
BONE ONLY) 22KG R/W



\*SELL IN CTN (RW 22KG)

**\$3<sup>80</sup>**  
KG

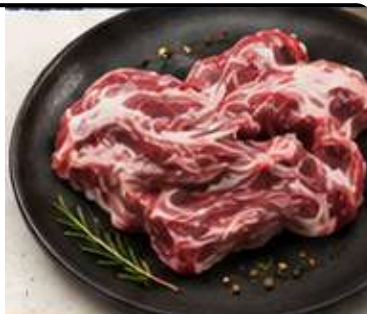
71400  
FROZEN PORK OFFAL -  
HEART 20KG R/W



\*SELL IN CTN (RW 20KG)

**\$5<sup>00</sup>**  
KG

16025  
FROZEN PORK OFFAL -  
DIAPHRAGM 12KG R/W



\*SELL IN CTN (RW 12KG)

**\$2<sup>80</sup>**  
KG

18498  
FROZEN PORK OFFAL -  
KIDNEY (ZHU YAO)  
10KG R/W



\*SELL IN CTN (RW 10KG)

**\$2<sup>30</sup>**  
KG

18506  
FROZEN PORK OFFAL -  
LIVER 12KG R/W



\*SELL IN CTN (RW 12KG)

**\$4<sup>50</sup>**  
KG

70863  
FROZEN PORK OFFAL -  
MAWS SCALDED 10KG R/W



\*SELL IN CTN (RW 10KG)

**\$11<sup>00</sup>**  
KG

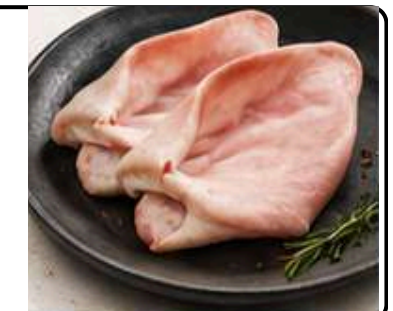
71555  
FROZEN PORK OFFAL -  
CHITTERLING /RECTURM  
10KG R/W



\*SELL IN CTN (RW 10KG)

**\$8<sup>50</sup>**  
KG

18389  
FROZEN PORK OFFAL -  
EAR 10KG R/W



\*SELL IN CTN (RW 10KG)

CONSISTENT QUALITY. RELIABLE SUPPLY. YOUR TRUSTED PARTNER.



**\$32<sup>00</sup>**  
UNIT



30514  
CHEESE - PARMESAN GRATED  
2KG(6) DIROSSI

**\$17<sup>00</sup>**  
UNIT



17644  
CHEESE - PARMESAN SHREDDED  
1KG (8) DIROSSI

**\$17<sup>00</sup>**  
UNIT



17693  
CHEESE - PARMESAN SHAVED  
1KG (8) DIROSSI

**\$20<sup>50</sup>**  
UNIT



19920  
CHEESE - SHREDDED EXTRA TASTY  
2KG(6) TUSCANY

**\$18<sup>50</sup>**  
UNIT



11618  
CHEESE - TASTY SLICED 90'S 1.5KG (8)  
DIROSSI



# MOZZARELLA CHEESE



**\$25<sup>00</sup>**  
UNIT

GOURMET TRADITIONAL **ITALIAN** STYLED  
WHITE MOZZARELLA WITH NAPOLI CUT

CATEGORY COMPARISON:  
FIORE DI LATTE, BUFFALO MOZZARELLA

OVEN TYPE:

- GAS IMPINGER,
- ELECTRIC CONVEYER,
- **WOODFIRE**



260°C - 400°C  
6 - 10 MINUTES



18847

**CHEESE - GOURMET MOZZARELLA SHREDDED  
(NAPOLI CUT) 2KG(6) DIROSSI**



AUTHENTIC **AUSTRALIAN** STYLED  
TRADITIONAL CRESCENT SHRED  
FORMA

OVEN TYPE:

- GAS IMPINGER,
- ELECTRIC CONVEYER
- SALAMANDER,
- COMBI OVEN



260°C - 280°C  
4-7 MINUTES



13333

**CHEESE - MOZZARELLA SHREDDED  
2KG(6) DIROSSI**

**\$22<sup>00</sup>**  
UNIT





# TATUA



- Flavour: Full rounded cream
- Heat stable
- Colour: Pale cream

**\$13.50**  
UNIT



**\$11.50**  
UNIT

18062  
CREAM - MASCARPONE 1KG (12)  
TATUA



18061  
CREAM - CREME FRAICHE 500G (6)  
TATUA

- Colour: Pale cream
- Flavour: Clean, creamy with slightly tangy end note



**\$9.50**  
UNIT

- Fresh creamy and light vanilla
- Foam stability: 15 minutes (intended to be consumed immediately)

18060  
CREAM - UNSWEETENED DAIRY WHIP 500G (12)  
TATUA



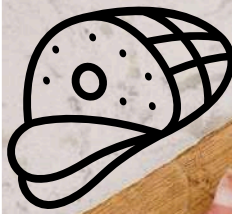


**\$19** 80 KG



**New!**

11137  
TURKEY - SMOKED ROLL SLICED 1KG (8)  
PENDLE



**\$8** 90 KG



**New!**

16869  
CHICKEN FRANKFURTS 2KG(7)  
PENDLE

**\$6** 70 KG



10767  
HAM - SANDWICH HAM 4 X 4 4KG (5)  
R/W PENDLE

**\$8** 80 KG



10761  
HAM - TRADITIONAL HALF LEG HAM  
B/LESS 2.5KG (5) R/W PENDLE

**\$7** 70 KG

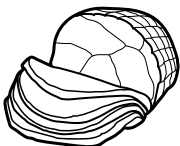


19733  
HAM - SOCCERBALL LEG HAM 4KG (4) R/W  
PENDLE

**\$11** 00 KG



19739  
HAM - SLICE PRAGER 1KG (8)  
PENDLE



**\$10** 60 KG



13465  
BACON - RINDLESS MIDDLE 5KG  
PENDLE

**\$7** 00 KG



16935  
BACON - DICED 2KG (7)  
PENDLE



**\$8** 00 KG



18869  
BACON - SHREDDED 2KG (7)  
PENDLE



**\$47<sup>00</sup>**  
CTN

18851  
DIP - ROASTED RED PEPPER HUMMUS 1KG X 4  
MEZETE

*mezele*



**\$68<sup>00</sup>**  
CTN

18350  
DIP - MUHAMMARA 1KG X 4  
MEZETE



**\$37<sup>00</sup>**  
CTN

18349  
DIP - ESSENTIAL HUMMUS 1KG X 4  
MEZETE



**\$54<sup>00</sup>**  
CTN

14598  
DIP - BABA GHANOUI 1KG X 4  
MEZETE





"MAEPRANOM"  
ALWAYS MAINTAINS ITS WELL-ACCLAIMED  
FLAVOUR AND THAI IDENTITY



**THAI CHILLI JAM**

**\$18<sup>00</sup>**  
CAN

12196  
CHILLI JAM CHILLI PASTE WITH  
SOY BEAN OIL 3KG(3)  
MAE PRANOM

**CHILLI PASTE IN OIL FOR TOM YUM (GLUTEN FREE) 3KG (6)**

**\$17<sup>00</sup>**  
CAN

21344  
CHILLI PASTE IN OIL FOR TOM YUM (GLUTEN FREE) 3KG (6)  
MAE PRANOM

**Thai Chilli Paste**

**\$9<sup>50</sup>**  
PK

11235  
NAMPRIK PAO (THAI CHILLI PASTE IN OIL) ORIGINAL GLUTEN FREE 1KG (6)  
MAE PRANOM

**BEST SELLER IN THAILAND**

**SWEET CHILLI SAUCE (GLUTEN FREE) (VEGAN) 5KG (3)**

**\$18<sup>50</sup>**  
UNIT

21343  
SWEET CHILLI SAUCE (GLUTEN FREE) (VEGAN) 5KG (3)  
MAE PRANOM

**Sweet and Sour Plum Sauce**

**\$3<sup>90</sup>**  
UNIT

11095  
PLUM SAUCE SWEET & SOUR (GLUTEN FREE) 980G (12)  
MAE PRANOM

**Sukiyaki Sauce - Cantonese Formula**

**\$4<sup>00</sup>**  
UNIT

11096  
SUKIYAKI SAUCE - CANTONESE STYLE 900G (12)  
MAE PRANOM

**Shrimp Paste with Soybean Oil**

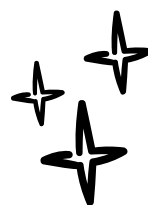
**\$8<sup>00</sup>**  
JAR

11094  
SHRIMP PASTE (GF) 180G(24)  
MAE PRANOM

**\$24<sup>50</sup>**  
UNIT



12219  
CHILLI PASTE FORMULA 8 3.2KG (4)  
CHUA HAH SENG



**\$5<sup>10</sup>**  
UNIT



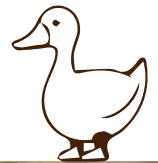
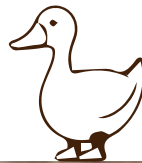
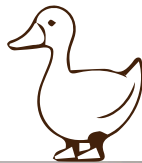
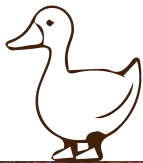
12217  
SEASONING OIL - CHILLI OIL 720G (12)  
CHUA HAH SENG



**\$21<sup>00</sup>**  
**KG**



F 14027 \*SELL IN CTN (R/W10KG)  
FROZEN DUCK BREAST SKIN ON 210-240G R/W 4PC X 10PK PEPE



Maryland trimmed is the leg and thigh of the duck. It has the backbone removed.

This is usually the portion that is used for Confit.

Roasted (approx 45 mins) or slow cooked

It produces the most tender, moist duck meat that simply falls off the bone.



**\$13<sup>00</sup>**  
**KG**

F 17169 \*SELL IN CTN (R/W18KG)  
FROZEN DUCK MARYLAND TRIM 240-270G R/W 10PC X 7PK PEPE



**\$11 20**  
CTN

**\$1 40**  
UNIT

18841  
TOFU - SILKEN TOFU TUBE  
250G (8) SOYAKING



SINCE 1978



15241  
TOFU - SILKEN TOFU  
300G (12) SOYAKING

**\$1 70**  
UNIT

**\$20 40**  
CTN



**\$15 60**  
CTN

**\$2 60**  
UNIT

15236  
TOFU - SOFT AND SMOOTH  
500G (6) SOYAKING



15235  
TOFU - ORIGINAL TOFU (REGULAR FIRM)  
835G (6) SOYAKING

**\$3 90**  
UNIT

**\$23 40**  
CTN



**\$23 40**  
CTN

**\$3 90**  
UNIT

15234  
TOFU - FINE TOFU (EXTRA FIRM)  
900G (6) SOYAKING



15233  
TOFU - HARD TOFU  
650G (6) SOYAKING



**\$4 20**  
UNIT

**\$25 20**  
CTN



\*ALL SOYAKING TOFU SELL IN CTN

# SEAFOOD

**\$160<sup>00</sup>**  
CTN



F 11002 \*SELL IN CTN (10 PACKS)

FROZEN PRAWN - RAW MEAT PEELLED  
VANN 21/25 700G X 10

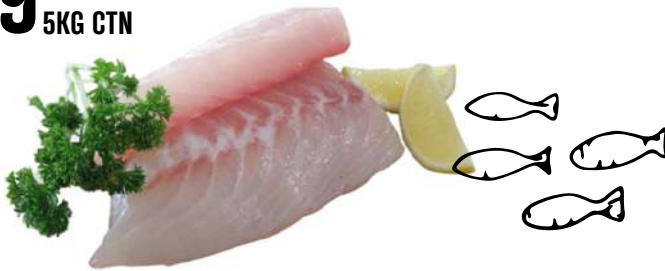
**\$175<sup>00</sup>**  
CTN



F 18077

FROZEN PRAWN - MEAT COOKED &  
PEELED VANN 60/90 1KG X 10

**\$99<sup>00</sup>**  
5KG CTN



F18056

FROZEN SNAPPER - WHITE FILLET SKINLESS  
300-500G 5KG CTN

**\$30<sup>00</sup>**  
5KG PK



F 28880 \*SELL IN CTN (2 PACKS)

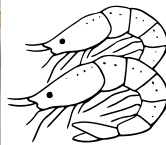
FROZEN BASA - FILLET 280/350G N/W  
PREMIUM 5KG/PK (2)

**\$12<sup>50</sup>**  
PK



F 15789

FROZEN OCTOPUS - BABY IQF 40/60  
1KG (10)

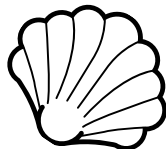


**\$9<sup>00</sup>**  
PK



F 70963

FROZEN HAIRTAIL ROLL SKEWER  
375G (20)



F FZ - FROZEN PACK AND STORAGE



PROUDLY AUSTRALIAN.  
FAMILY OWNED SINCE 1976.

# PREMIUM DAGWOOD DOGS



**\$49<sup>00</sup>**  
CTN

**\$3<sup>07</sup>**  
UNIT



DEEP FRY: From frozen 6-7 minutes at 180°C



AIR FRY: 12 - 13 minutes at preheated 200°C

14672  
FROZEN ORIGINAL KOREAN K-DOG  
16 X 110G KEITH'S



**\$31<sup>00</sup>**  
CTN

**\$1<sup>55</sup>**  
UNIT



DEEP FRY: From frozen 5 minutes at 180°C



OVEN: 15 - 20 minutes at preheated 180°C

15819  
FROZEN DAGWOOD DOGS  
20 X 125G KEITH'S



**\$38<sup>00</sup>**  
CTN

**\$1<sup>90</sup>**  
UNIT



DEEP FRY: From frozen for 6-7 minutes at 180°C until Frankfurt is piping hot (over 75°C)

13936  
FROZEN BEEF DAGWOOD DOGS (HALAL)  
20 X 125G KEITH'S



F FZ - FROZEN PACK AND STORAGE

PERFECT FOR FOOD TRUCKS, CAFES, RESTAURANTS, EVENTS & MORE!



**\$5<sup>80</sup>**  
UNIT



18960  
PREMIUM SOY SAUCE 1.9L (6)

**\$10<sup>00</sup>**  
UNIT



18969  
LIGHT SOY SAUCE DELICIOUS 4.9L (2)

\*SELL IN CTN (2 UNITS)

**\$19<sup>50</sup>**  
UNIT



18970  
LIGHT SOY SAUCE DELICIOUS  
VALUE DRUM 10.5L (2)

\*SELL IN CTN (2 UNITS)

**\$12<sup>80</sup>**  
UNIT



21462  
LIGHT SOY SAUCE GOLDEN LABEL  
4.9L (2)

\*SELL IN CTN (2 UNITS)

**\$13<sup>00</sup>**  
UNIT



18968  
DARK SOY SAUCE SIGNATURE  
4.9L (2)

**\$13<sup>00</sup>**  
UNIT



18966  
DARK SOY SAUCE MUSHROOM  
4.9L (2)

**\$8<sup>00</sup>**  
UNIT



18283  
SOY SAUCE GLUTEN  
FREE 1.9L (6)

**\$6<sup>00</sup>**  
UNIT



18963  
TASTY SEAFOOD FLAVOUR  
LIGHT SOY SAUCE 1.75L (6)

\*SELL IN CTN (6 UNITS)

**\$6<sup>00</sup>**  
UNIT



18967  
SEASONING SOY SAUCE  
FOR SEAFOOD 1.75L (6)

\*SELL IN CTN (6 UNITS)

**\$5<sup>00</sup>**  
UNIT



18965  
COOKING WINE - GOLDEN  
LABEL ZERO ADDED 1.9L (6)



**\$6** <sup>60</sup> UNIT



14778  
SIGNATURE OYSTER SAUCE  
IN TIN 2.27KG (6)  
*\*SELL IN CTN (6 UNITS)*

**\$5** <sup>50</sup> UNIT



18974  
OYSTER SAUCE BOTTLE  
2.27KG (4)  
*\*SELL IN CTN (4 UNITS)*

**\$10** <sup>50</sup> UNIT



18975  
OYSTER SAUCE VALUE DRUM  
6KG (2)  
*\*SELL IN CTN (2 UNITS)*

**\$21** <sup>00</sup> UNIT



10760  
EASONING OIL - SESAME OIL  
100% PURE 1.9L (6)

**\$5** <sup>80</sup> UNIT



17314  
SOYBEAN PASTE CLASSIC 2KG (6)

**\$16** <sup>00</sup> UNIT



10757  
CHU HOU PASTE 6.5KG (2)  
*\*SELL IN CTN (2 UNITS)*

**\$2** <sup>20</sup> UNIT



18953  
CHILLI GARLIC SAUCE 230G (15)

**\$6** <sup>90</sup> UNIT



10756  
HOI SIN SAUCE CLASSIC IN TIN  
2.27KG (6)



# OIL & NOODLE

Made for Commercial Kitchens

Engineered for Performance

- consistency,
- efficiency,
- oil longevity matter most

**Built for High-Volume Frying**

14665  
OIL - PREMIUM VEGETABLE FRYING OIL  
15L BAG-IN-BOX GOLD CHOICE



**Great for Stir-fry, Deep Fry & Baking**

12283  
OIL - CANOLA 15L BAG-IN-BOX  
GOLD CHOICE



**\$5.00 UNIT**

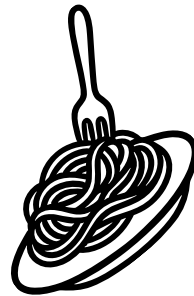


18441  
FRESH WONTON PASTRY  
1KG(20) MASTER MANS



18852  
FRESH FRIED NOODLES 1KG (20)  
MASTER MANS

**\$5.00 UNIT**



18439  
FRESH EGG NOODLES (THIN) 1KG(20)  
MASTER MANS

**\$5.00 UNIT**



18440  
FRESH HOKKEIN NOODLES 1KG(20)  
MASTER MANS

**\$3.00 UNIT**



18438  
FRESH CANTON NOODLES 1KG(20)  
MASTER MANS

**\$3.00 UNIT**

# Canned Specials

**\$20<sup>70</sup>**  
CTN

**\$6<sup>90</sup>**  
TIN



\*SELL IN CTN (3 CANS)

15209  
TOMATO PUREE 2.9KG(3)  
TWIN PINE

**\$27<sup>00</sup>**  
CTN

**\$9<sup>00</sup>**  
TIN



\*SELL IN CTN (3 CANS)

18809  
TOMATO PASTE 3KG(3)  
TWIN PINE



**TWIN PINE**



**\$22<sup>20</sup>**  
CTN

**\$7<sup>40</sup>**  
CAN



\*SELL IN CTN (3 CANS)

26505  
BEETROOT SLICES  
3KG X 3 TWIN PINE

**\$24<sup>90</sup>**  
CTN

**\$8<sup>30</sup>**  
CAN



\*SELL IN CTN (3 CANS)

18311  
PINEAPPLE CHUNKS IN SYRUP  
A10 3KG X 3 TWIN PINE

**\$26<sup>40</sup>**  
CTN

**\$8<sup>80</sup>**  
CAN



\*SELL IN CTN (3 CANS)

10524  
PINEAPPLE SLICES IN SYRUP  
A10 3KG X 3 TWIN PINE



**\$24<sup>00</sup>**  
CTN

**\$2<sup>00</sup>**  
CAN



\*SELL IN CTN (12 CANS)

19522  
LYCHEE IN SYRUP EASY OPEN 565G X 12  
TWIN PINE



# MILKLAB™

## AUSTRALIA'S #1 BARISTA PLANT MILK BRAND

*“not only taste delicious but are perfect  
for texturing, stretching and creating  
latte art.”*

**\$26<sup>00</sup>**  
CTN



28069  
UHT - ALMOND MILK 8X1LT  
MILK LAB

**\$21<sup>30</sup>**  
CTN



16768  
UHT - OAT MILK 8X1LT  
MILK LAB

**\$19<sup>80</sup>**  
CTN



28070  
UHT - SOY MILK 8X1LT  
MILK LAB

**\$31<sup>00</sup>**  
CTN



28074  
UHT - LACTOSE FREE MILK 12X1LT  
MILK LAB

**\$29<sup>00</sup>**  
CTN



28071  
UHT - MACADAMIA MILK 8X1LT  
MILK LAB

**\$26<sup>00</sup>**  
CTN



28068  
UHT - COCONUT MILK 8X1LT  
MILK LAB

# SWEETEN YOUR MENU

*C*ashmere  
syrups

**\$8** 50  
UNIT + 10% GST



12123  
HAZELNUT SYRUP (PET)  
750ML (6)

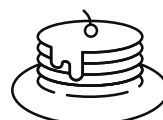


12122  
CARAMEL SYRUP (PET)  
750ML (6)



12124  
VANILLA SYRUP (PET)  
750ML (6)

Adding flavour to your coffee, hot chocolate, milkshakes, and desserts



GENKI FOREST

# LIFE IN HYPER FLAVOUR



Sugar Free



Caffeine Free



Contact your sales rep to get free sample package.

GENKI FOREST

# LIFE IN HYPER FLAVOUR

## SPARKLING WATER BEVERAGE

**\$16.80**  
CTN

**\$1.12**  
BTL



11714  
SPARKLING WATER WHITE PEACH ZERO SUGAR 480 ML X 15

**\$16.80**  
CTN

**\$1.12**  
BTL



11713  
SPARKLING WATER LYCHEE FIZZY ZERO SUGAR 480ML X 15

**\$16.80**  
CTN

**\$1.12**  
BTL



11715  
SPARKLING WATER GRAPE DELIGHT ZERO SUGAR 480ML X 15

**\$21.00**  
CTN

**\$0.88**  
BTL



18532  
SPARKLING WATER PEACH ZERO SUGAR 330ML X 24

**\$21.00**  
CTN

**\$0.88**  
BTL



18533  
SPARKLING WATER LYCHEE FIZZY ZERO SUGAR 330ML X 24

**\$21.00**  
CTN

**\$0.88**  
BTL



18534  
SPARKLING WATER GRAPE ZERO SUGAR 330ML X 24

**\$21.00**  
CTN

**\$0.88**  
BTL



18537  
SPARKLING WATER STRAWBERRY ZERO SUGAR 330ML X 24

**\$21.00**  
CTN

**\$0.88**  
BTL



18538  
SPARKLING WATER POMELO ZERO SUGAR 330ML X 24

## ASIAN BOTANICAL DRINK

RED BEAN & COIX SEED WATER

**\$16.80**

500 ML x 15

**\$1.12**  
BTL

+10% GST



11779

RED DATE & GOJI BERRY WATER

**\$16.80**

500 ML x 15

**\$1.12**  
BTL

+10% GST



11770

# KOREAN DRINK

**\$22 00** <sup>\$0 92</sup>  
CTN CAN



Welchs  
스트로베리맛  
(355ml)

18576  
DRINK - NONGSHIM WELCHS  
STRAWBERRY 355ML X 24

**\$22 00** <sup>\$0 92</sup>  
CTN CAN



Welchs  
그레이트프맛  
(355ml)

18581  
DRINK - NONGSHIM WELCHS  
GRAPE 355ML X 24

**\$22 00** <sup>\$0 92</sup>  
CTN CAN



Welchs  
화이트 그레이트프맛  
(355ml)

18580  
DRINK - NONGSHIM WELCHS  
GREEN GRAPE 355ML X 24

**\$25 50**  
CTN

<sup>\$1 10</sup>  
CAN



18590

DRINKS - LOTTE CHILSUNG CIDER  
355ML X 24 LOTTE

**\$51 00**  
CTN

<sup>\$0 71</sup>  
CAN



18587

DRINKS - GRAPE BONG BONG  
238ML X 72 HAITAI



**\$21 00**  
CTN

<sup>\$0 88</sup>  
CAN



18589

DRINKS - LOTTE MILKISS  
340ML X 24 LOTTE

**\$51 00**  
CTN

<sup>\$0 71</sup>  
CAN



18584

DRINKS - CRUSHED PEAR  
238ML X 72 HAITAI

**\$41 00**  
CTN

<sup>\$3 42</sup>  
BTL



18586

DRINKS - CRUSHED PEAR  
1.5L X 12 HAITAI



# KOREAN RANGE

## Coming Soon

Premium Korean foodservice solutions built for modern kitchens.

FEATURING LEADING KOREAN BRANDS



PREVIEW OF THE RANGE



No.1 Korean Soy Sauce



Premium Chilli Powder



No.1 Korean Ketchup



No.1 Korean Mayo



Premium Corn Syrup



Premium Bulgogi Sauce



Best Selling Chilli Paste



Best Selling Soy Bean Paste



Original Korean MSG



Original Korean Luncheon Meat

More products coming soon!



# BAMBOO SALAD BOWLS

16OZ-32OZ

Missed our Salad Bowl promo last year?  
Good news: it's back!

Stock up now and maximise your EOFY purchasing benefits.



**\$28<sup>00</sup>** CTN

10 C/PC



14521  
SALAD BOWL - PE COATED PAPER  
SALAD BOWL 16OZ 300'S

**\$33<sup>60</sup>** CTN

11.5 C/PC



14522  
SALAD BOWL - PE COATED PAPER  
SALAD BOWL 25OZ 300'S

**\$34<sup>80</sup>** CTN

12 C/PC



14523  
SALAD BOWL - PE COATED PAPER  
SALAD BOWL 32OZ 300'S

**\$22<sup>90</sup>** CTN

8 C/PC

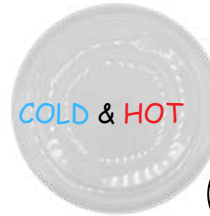


13155  
LID RAISED PET COLD FOOD  
FOR 16/25/32OZ 300'S

COLD & HOT

**\$25<sup>60</sup>** CTN

9 C/PC



17046  
LID RAISED PP HOT & COLD  
FOR 16/25/32OZ 300'S

42OZ (1240ml)

**\$46<sup>20</sup>** CTN

16 C/PC



27944  
SALAD BOWL - PE COATED PAPER  
SALAD BOWL 42OZ 300'S



**\$32<sup>80</sup>** CTN

11 C/PC

27945  
LID RAISED PET COLD FOOD  
185MM FOR 42OZ 300'S



**\$32<sup>80</sup>** CTN

11 C/PC

18500  
LID RAISED PP HOT & COLD  
185MM FOR 42OZ 300'S

ALL PRICE EXCLUDING 10% GST



Custom Printing Available

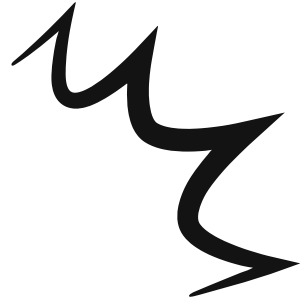


# KRAFT PAPER CONTAINERS

**\$32<sup>80</sup>**  
CTN

11 C  
PC

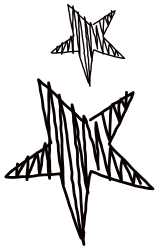
17480  
RECTANGULAR CONTAINER - KRAFT  
PAPER 500ML 300'S



**\$34<sup>80</sup>**  
CTN

12 C  
PC

17481  
RECTANGULAR CONTAINER - KRAFT  
PAPER 650ML 300'S



**\$36<sup>80</sup>**  
CTN

12.5 C  
PC

17482  
RECTANGULAR CONTAINER - KRAFT  
PAPER 750ML 300'S



**\$38<sup>80</sup>**  
CTN

13 C  
PC

17486  
RECTANGULAR CONTAINER - KRAFT  
PAPER 1000ML 300'S



**\$26<sup>80</sup>**  
CTN

9 C  
PC

COLD ONLY

18945  
RECTANGULAR LID - PET COLD FOOD  
FOR PAPER CONTAINER 300'S



**\$26<sup>80</sup>**  
CTN

9 C  
PC

COLD & HOT

17478  
RECTANGULAR LID - PP HOT & COLD  
FOR PAPER CONTAINER 300'S



ALL PRICE EXCLUDING 10% GST



Custom Printing Available



# ONE-STOP PACKAGING SOLUTION

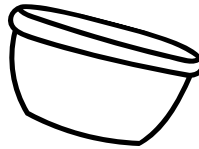
# SUGARCANE BOWL



PET LID  
RECYCLABLE



COMPOSTABLE



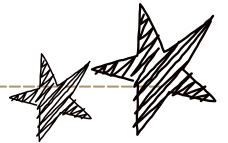
**\$60<sup>00</sup>**  
CTN

12 C  
PC



32OZ(950ml)

21365  
SUGARCANE BOWL - WHITE 32OZ 500'S  
(LID 17564)



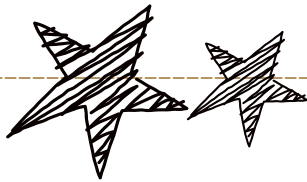
**\$72<sup>00</sup>**  
CTN

14.5 C  
PC



40OZ(1185ml)

20220  
SUGARCANE BOWL - 40OZ WHITE 500'S  
(LIDS 17564)



17564  
PET LIDS - FIT SUGARCANE BOWL  
32/40OZ 500'S

13.5 C  
PC

**\$66<sup>00</sup>**  
CTN

Your Customised  
Packaging  
Made Easy

**ALL PRICE EXCLUDING 10% GST**  
ORDER BEFORE EOFY TO STOCK UP AND TAKE  
ADVANTAGE OF GST CLAIM OPPORTUNITIES.



Custom Printing Available



# VINYL GLOVES



NOT MADE WITH NATURAL RUBBER LATEX



POWDER FREE



FOOD GRADE

## CLEAR

**\$3<sup>00</sup>**  
**PK**

\*SELL IN CTN (10 PACKS)



12718

GLOVES - VINYL POWDER FREE CLEAR SMALL 100'S (10)

12717

GLOVES - VINYL POWDER FREE CLEAR MEDIUM 100'S (10)

12716

GLOVES - VINYL POWDER FREE CLEAR LARGE 100'S (10)

19656

GLOVES - VINYL POWDER FREE CLEAR EXTRA LARGE 100'S (10)

## BLUE

**\$3<sup>20</sup>**  
**PK**

\*SELL IN CTN (10 PACKS)



12469

GLOVES - VINYL POWDER FREE **BLUE** SMALL 100'S (10)

12470

GLOVES - VINYL POWDER FREE **BLUE** MEDIUM 100'S (10)

12471

GLOVES - VINYL POWDER FREE **BLUE** LARGE 100'S (10)

16468

GLOVES - VINYL POWDER FREE **BLUE** EXTRA LARGE 100'S (10)

ALL PRICE EXCLUDING 10% GST





## Sydney

(02) 9852 8800

25 Bessemer Street, Blacktown NSW 2148



## Brisbane

(07) 3386 1818

94 Burnside Road, Ormeau QLD 4208



## Townsville

(07) 2111 9898

304 Boundary Street, Townsville QLD 4810



## Rockhampton

(07) 4933 3188

118 Middle Rd, Gracemere QLD 4702

**Order Now :**



**[www.befoodsonline.com.au](http://www.befoodsonline.com.au)**